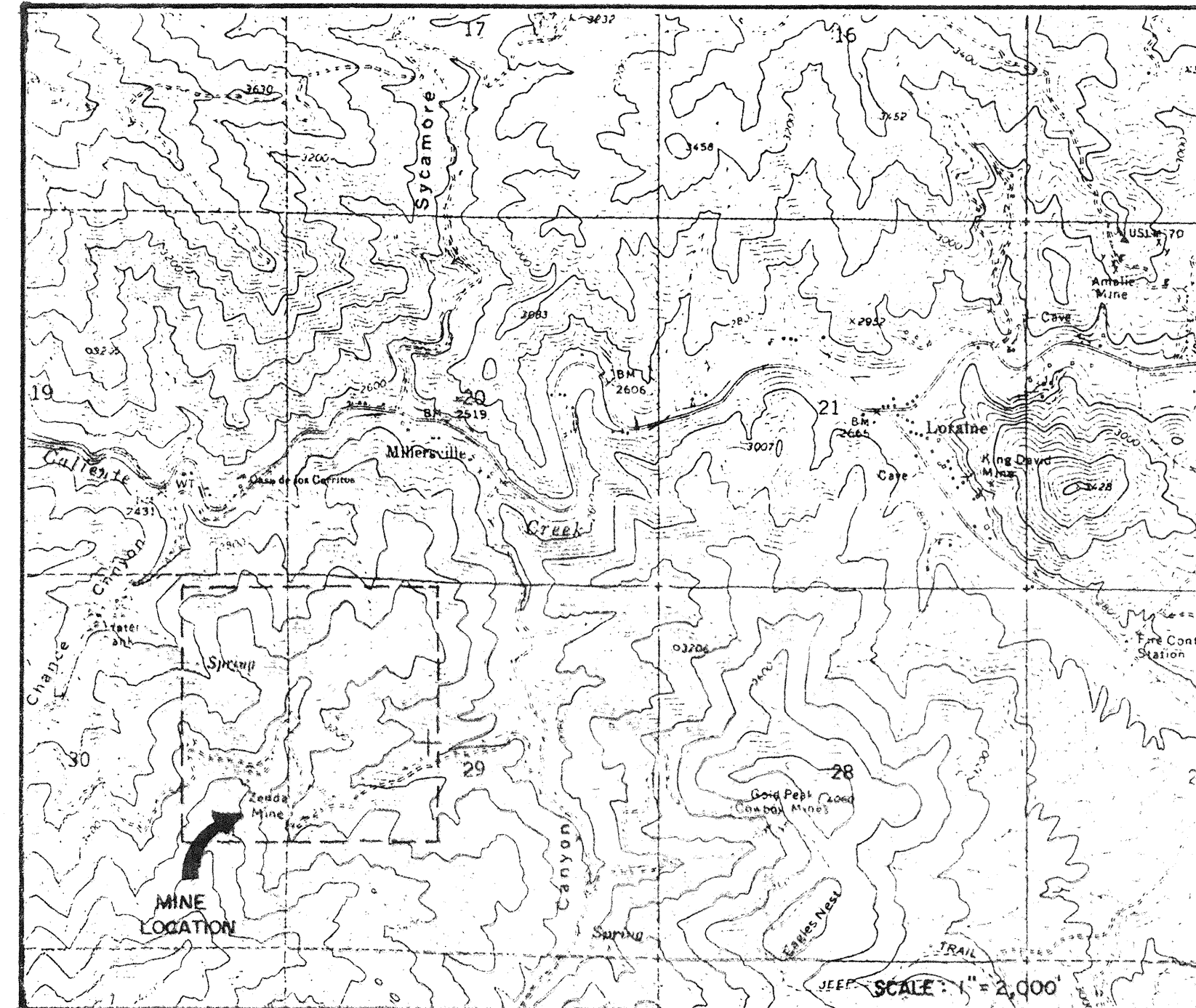


# ZENDA MINE PROJECT

## VALLEY LEACH FACILITIES

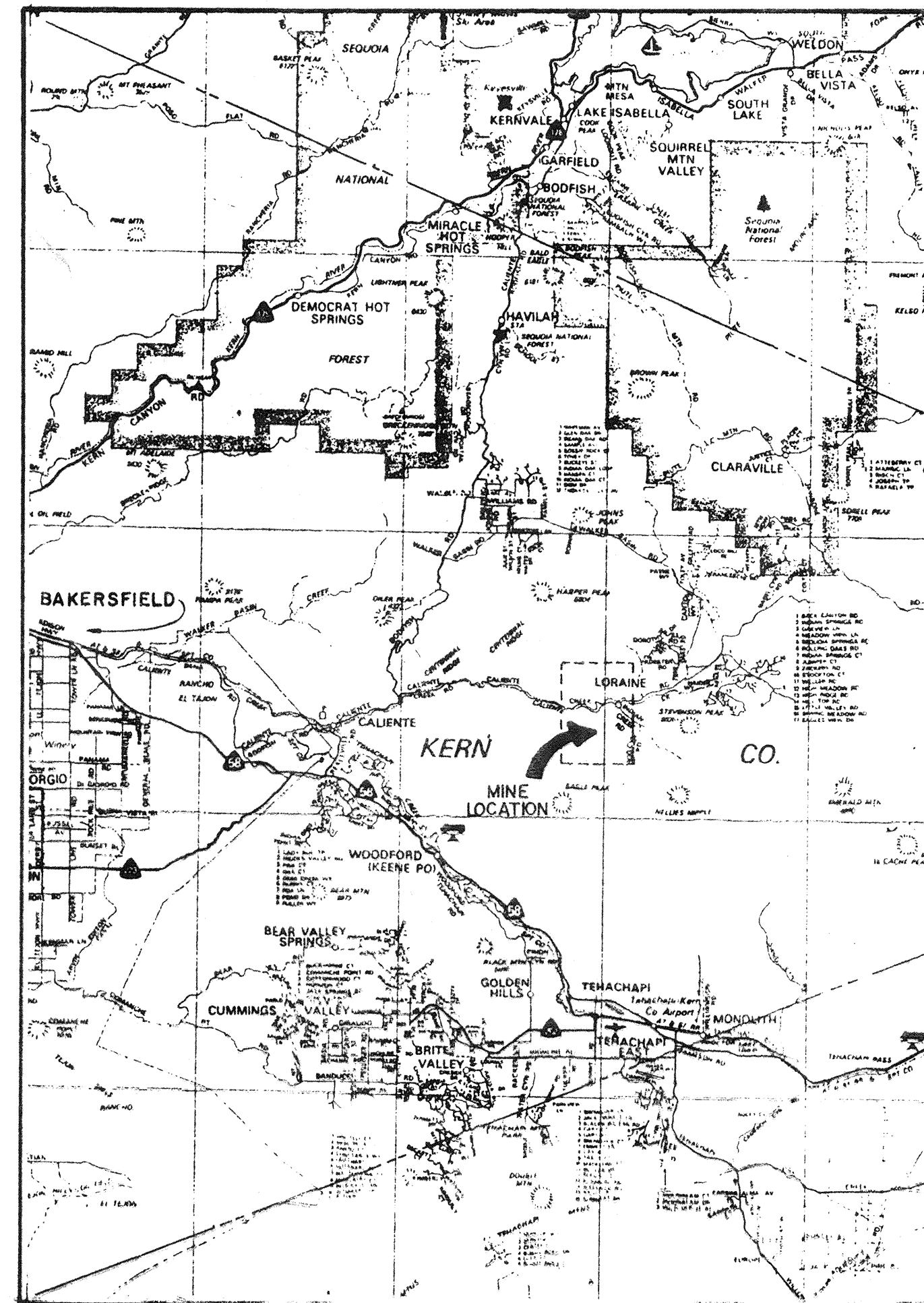
SHEET INDEX

DRAWING NO.	TITLE	REVISION
100-001	LOCATION AND VICINITY MAPS	3
100-002	GENERAL FACILITIES	3
100-003	ONE-HUNDRED YEAR STORM CATCHMENT	1
100-004	ONE-THOUSAND YEAR STORM CATCHMENT	1
200-001	SURFICIAL GEOLOGY AND TEST PITS	1
300-001	VALLEY FILL GENERAL FACILITIES	1
300-002	GRADING PLAN	3
300-003	LEACHATE COLLECTION AND RECOVERY SYSTEM	1
300-004	STORM AND UNDERDRAIN PIPING	3
300-005	SPILLWAY CONDUIT PROFILE	1
300-006	SPILLWAY CONDUIT LEFT LATERAL	2
300-007	SPILLWAY CONDUIT RIGHT LATERAL	2
300-008	CROSS-SECTIONS A-A' AND B-B'	2
300-009	VALLEY PROFILE	3
300-010	GENERAL DETAILS	3
300-011	VALLEY FILL DETAILS	2
300-012	SPILLWAY CONDUIT DETAILS	1
300-013	MISCELLANEOUS DETAILS	0
400-001	BARREN POND CROSS-SECTIONS	2
400-002	BARREN POND DETAILS	2

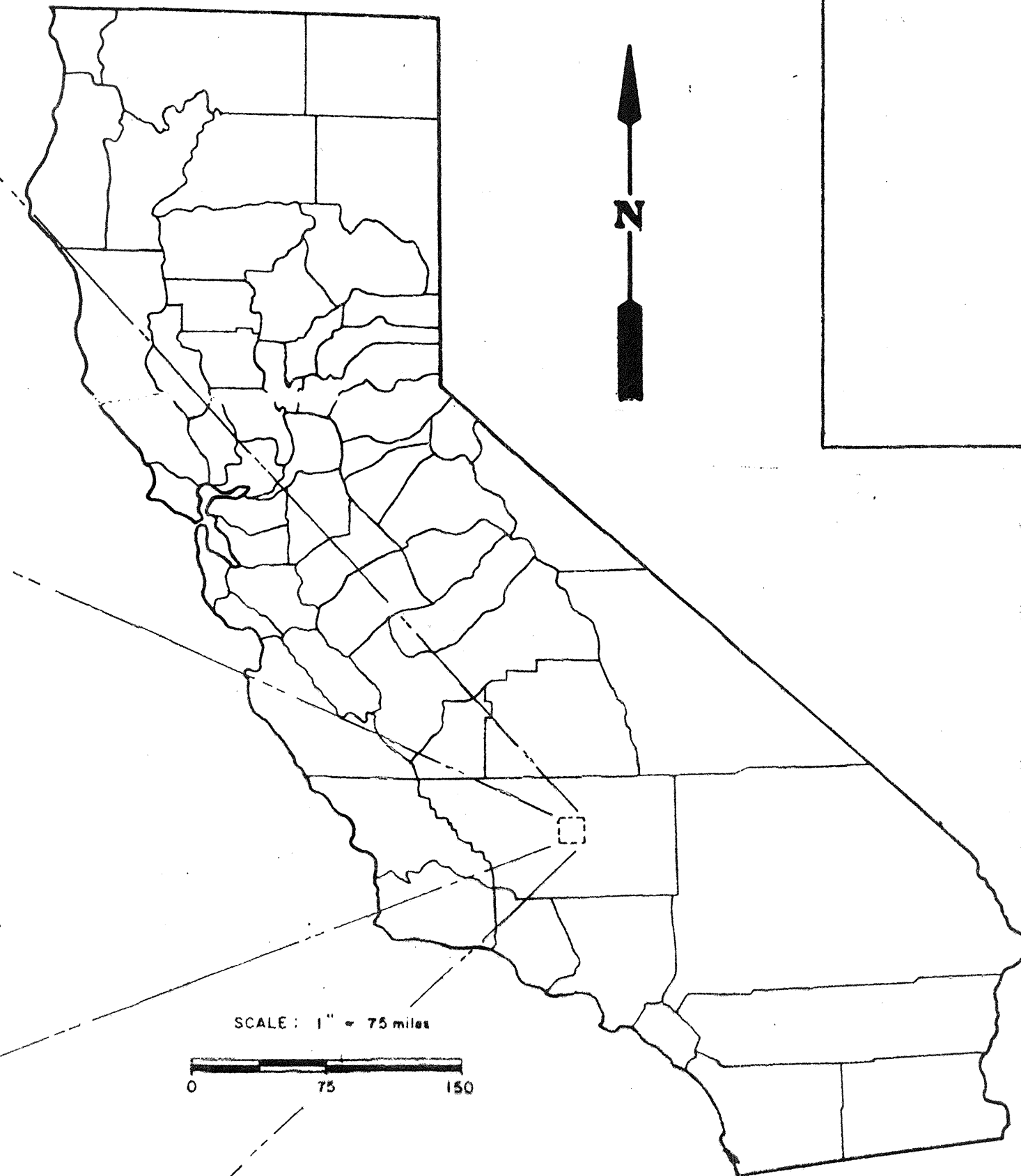


VICINITY MAP

ORIGIN OF MAP:  
USGS LORRAINE QUADRANGLE  
15 MINUTE SERIES TOPO  
LORRAINE, CALIF.  
DATED 1972



SCALE: 1" = 5 MILES



SCALE: 1" = 75 miles

CALIFORNIA

PROJECT OWNER  
EQUINOX RESOURCES INC.  
P.O. BOX 1201  
NEVADA CITY, CALIF. 95959  
(916) 272-2474

DESIGN ENGINEER &  
GEOTECHNICAL CONSULTANTS  
VECTOR ENGINEERING, INC.  
12438 LOMA RICA DR., SUITE C  
GRASS VALLEY, CALIF. 95945  
(916) 272-2448

STATE USE ONLY

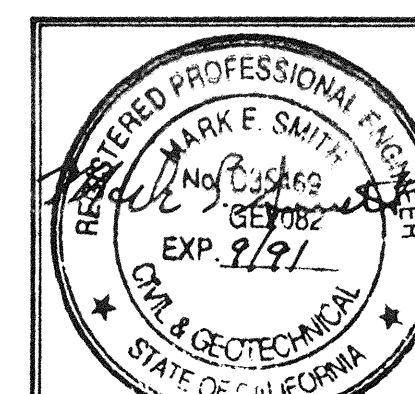
VECTOR ENGINEERING, INC. GRASS VALLEY, CA. RENO, NV.

EQUINOX RESOURCES INC.,  
ZENDA PROJECT

VALLEY FILL LEACH FACILITIES

LOCATION AND VICINITY MAPS

T.305, R.33E, M.D.B. & M.  
KERN COUNTY, CALIFORNIA



DESIGNED	NO.	REVISION	DATE	VECTOR	EQUINOX
1-89	3	PHASE I CONSTRUCTION	7-13-90	TVR	
	2	SUBMITTAL TO RWOCB	10-28-89	TVR	
	1	REVISIONS	3-6-89	TVR	
	0	ISSUED FOR PERMITS	2-16-89	MEL	

DRAWING NO. 100-001