

BLUE DIAMOND GYPSUM RAILROAD, NEVADA

Gregg Wilkerson and Larry Vredenburg

Feb. 5, 2024

INTRODUCTION

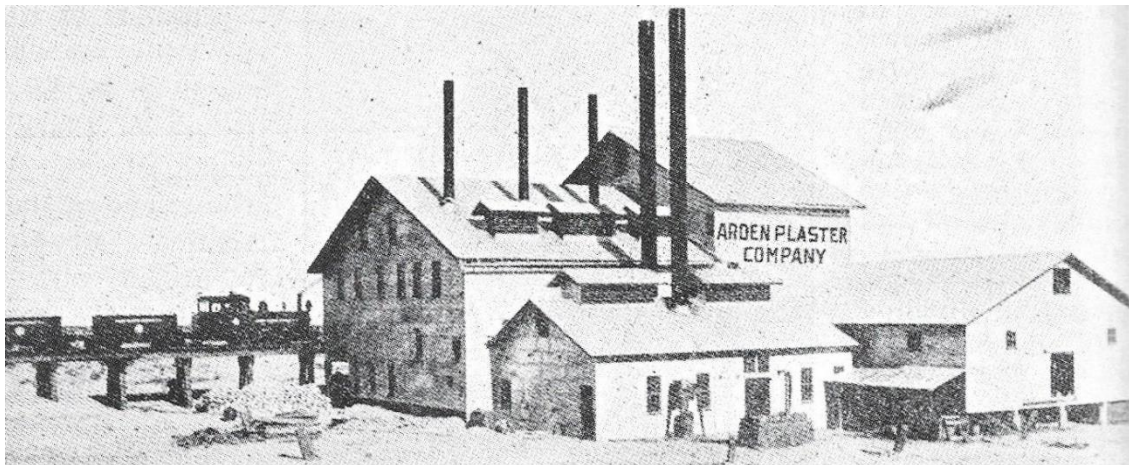
This report is part of a research project that describes the relationships between mines and railroads in the Mojave Desert and southwestern Great Basin. The collection can be accessed at

<http://www.greggwilkerson.com/railroads.html>

HISTORY

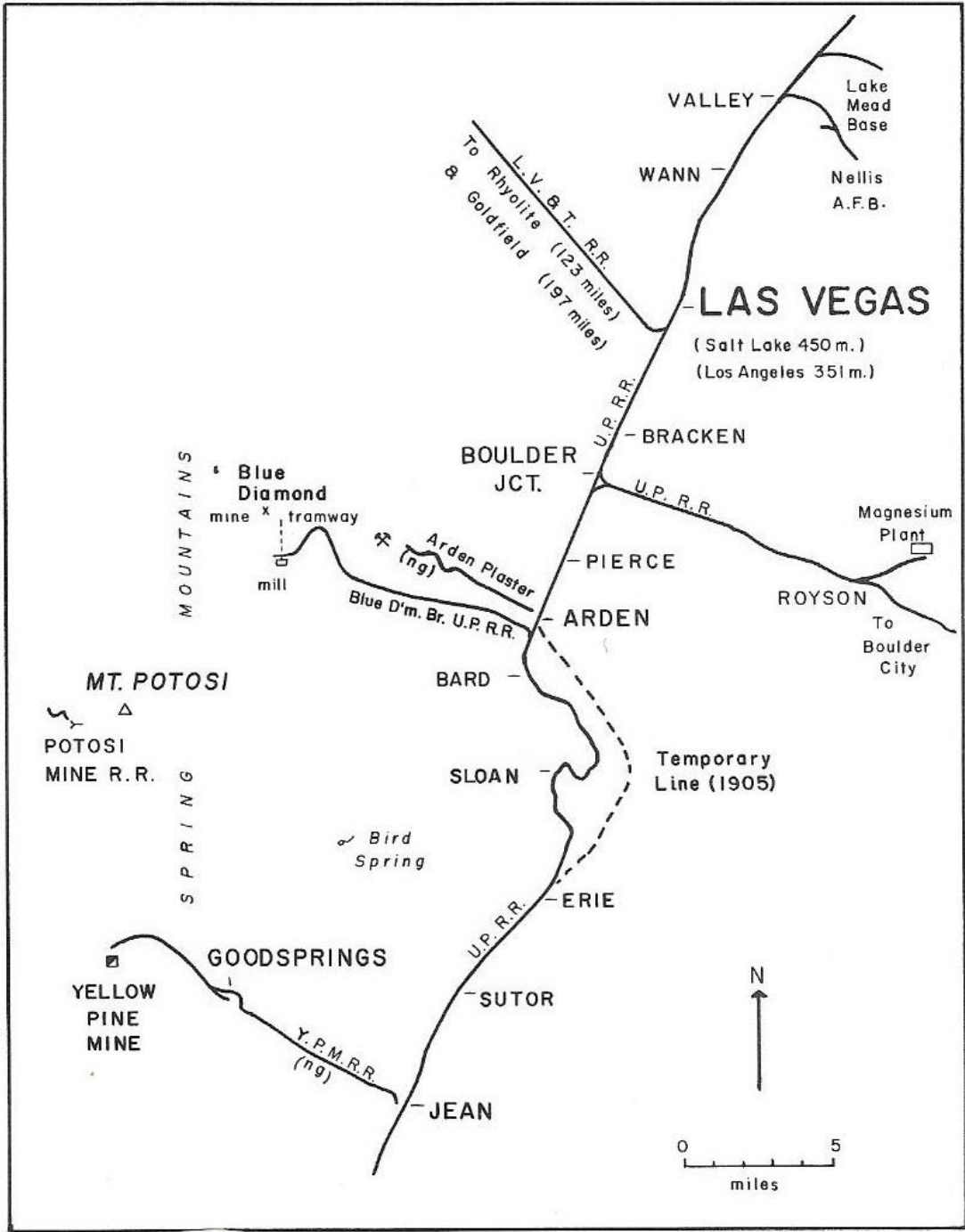
The Ardan Mine Railroad was a spur line of the Los Angeles and Salt Lake (LA&SL) Railroad. A sister railroad, built in 1925, was the Blue Diamond.

Gypsum for plaster was first mined in the Diamond Mountains in 1907 by the Ardan Plaster Company. Part of this operation involved construction of a 3 feet gauge railroad. It operated through 1930 (Myrick, 1963:760).

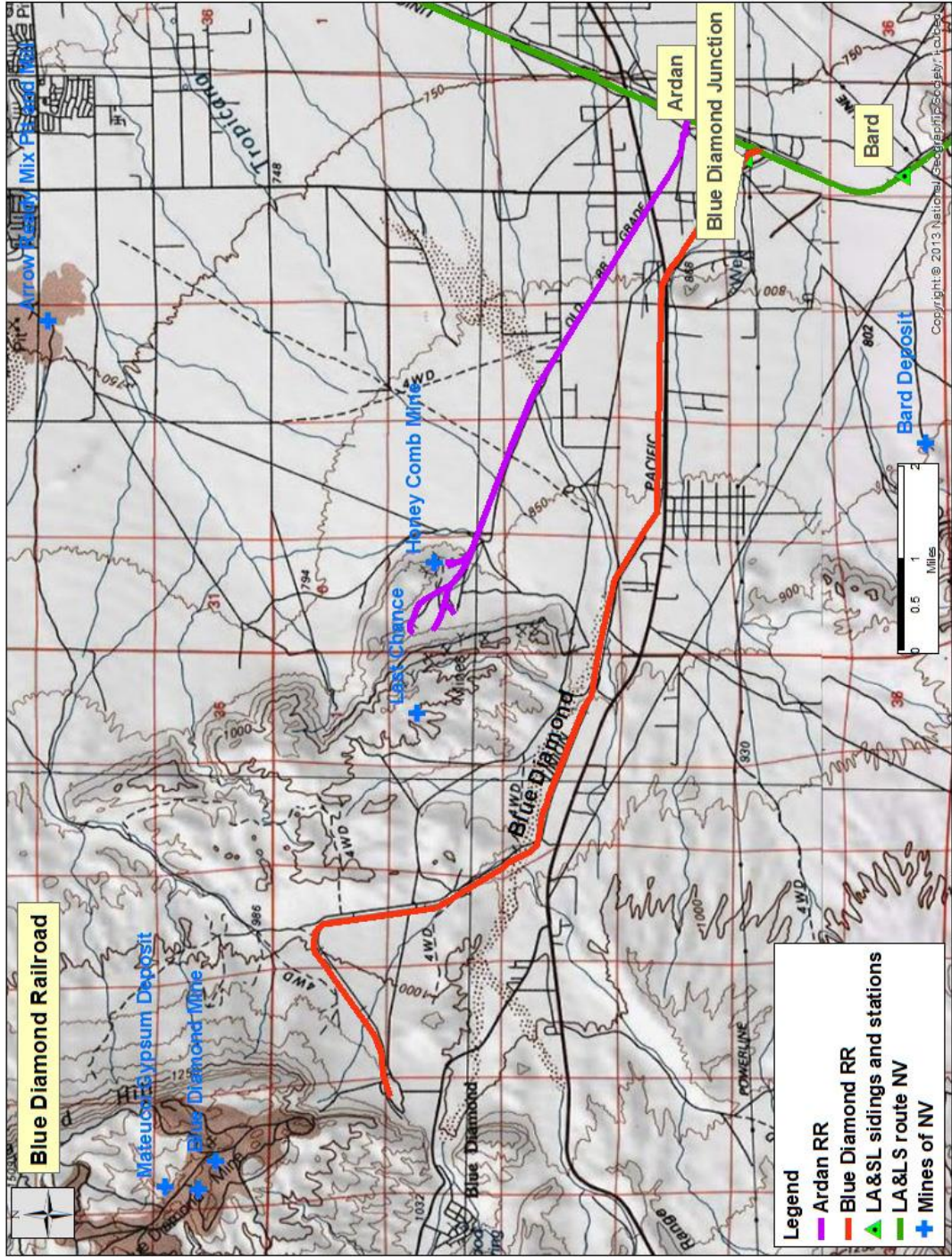


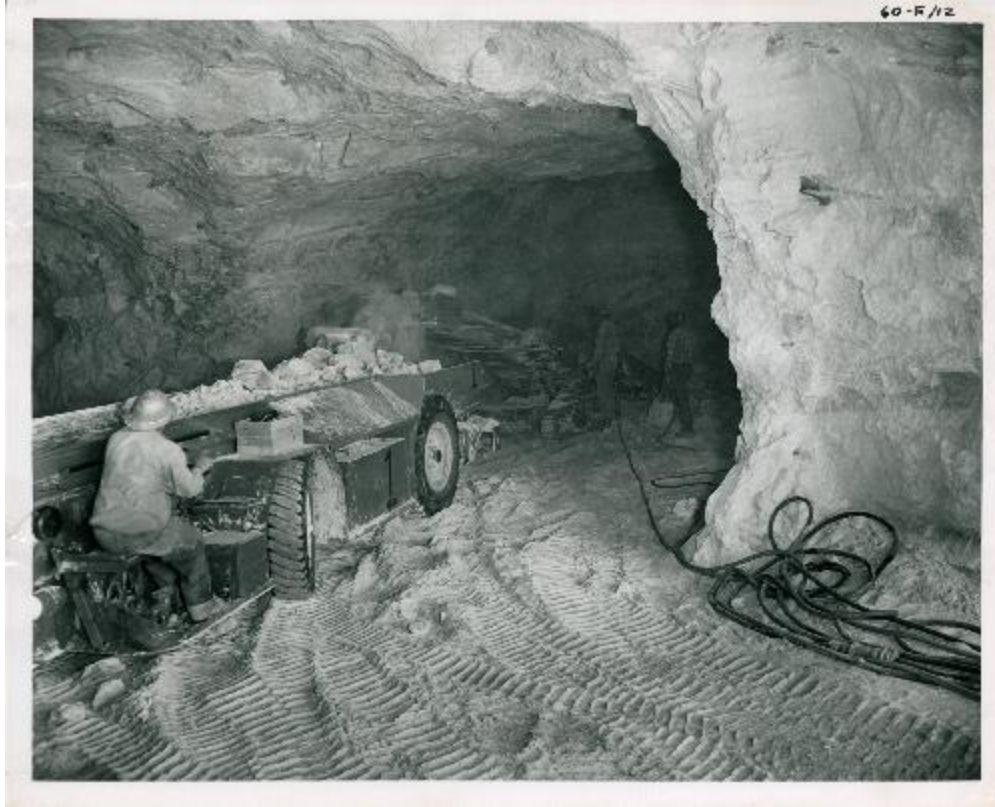
Caption: Ardan Plaster Company plant and railroad circa 1912. From Myrick (1963:860); Nevada Historical Society Collection.

The Blue Diamond Mine and mill was initially owned by a Los Angeles company known as Blue Diamond. This company commenced mining in 1925 after an 11-mile long rail line to Arden on the LA&SL railroad was re-constructed to standard gauge. An on-site processing plant was added in 1941, followed a year later by the construction of a nearby company town, known as Blue Diamond, Nevada. The mine was eventually sold to James Hardie Gypsum, which expanded operations in 1998. BPB took over the gypsum factory a few years later, and developer Jim Rhodes purchased 2,400 acres in 2003 (Wikipedia, 2023; Myrick, 1963, p. 761).



Caption: Las Vegas Area railroads. From Myrick, 1963, p. 761.





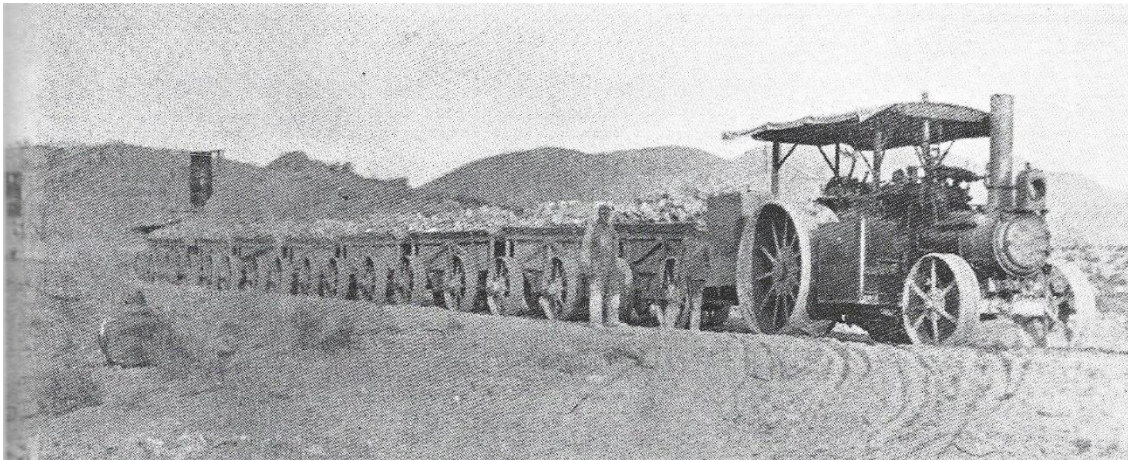
Blue Diamond Mine, from <https://www.reviewjournal.com/uncategorized/southwest-of-las-vegas-village-of-blue-diamond-upholds-nevadas-legacy/> accessed Nov. 11, 2023



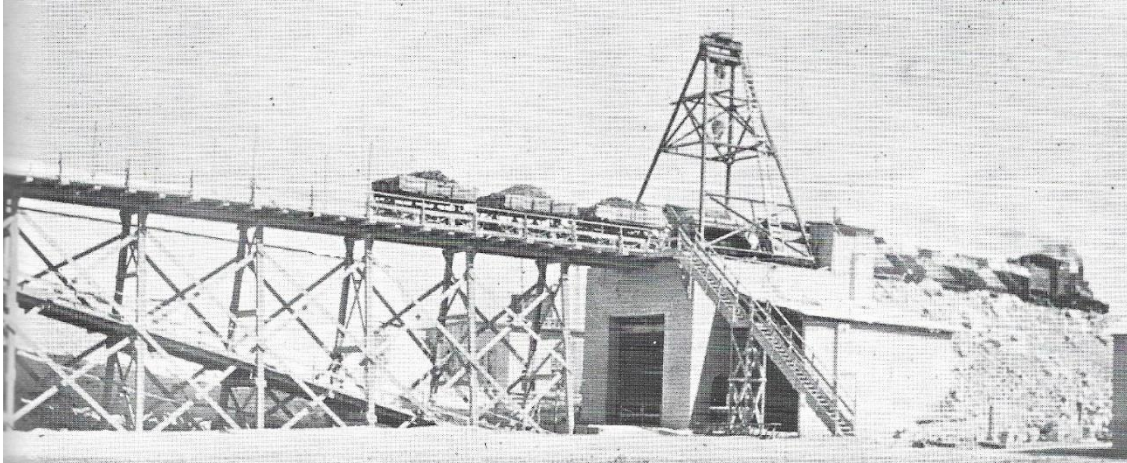
Blue Diamond Mill and Ore Loading Facility, from <https://www.reviewjournal.com/uncategorized/southwest-of-las-vegas-village-of-blue-diamond-upholds-nevadas-legacy/> accessed Nov. 11, 2023



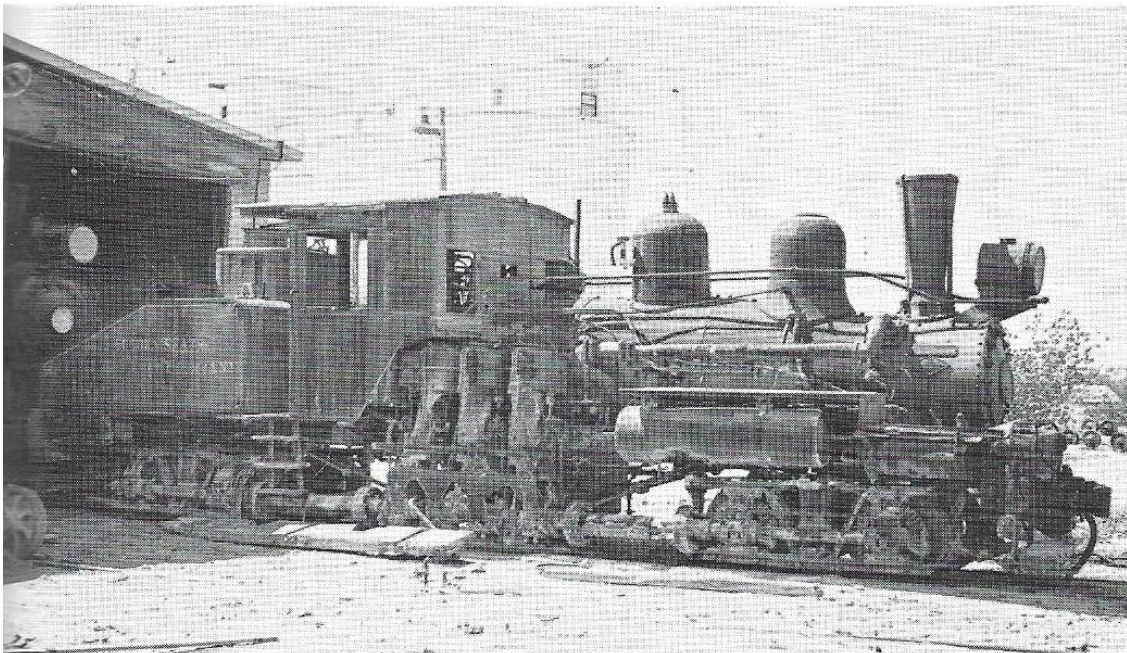
Caption: Blue Diamond Railway Terminus. From <https://photo.abandonedrails.com/tn9b61ug.jpg> accessed Nov. 11, 2023.



Caption: Blue Diamond steam tractor and cars circa 1912. From Myrick (1963:859); Garner A Beck Collection.



Caption: Blue Diamond mill 1915 to 1928. From Myrick (1963:859); Garner A Beck Collection.



Caption: Blue Diamond standard gauge Shay locomotive 1915-1928. From Myrick (1963:859); Allan Youell Collection.

The Blue Diamond mine is in the Ardan Mining District. Major gypsum producers include the Arden, Bard, Blue Diamond, Honey Comb, Last Chance and Mateucci mines. Descriptions of them are found in Murphy (1954, Fig. 2), Longwell (1965:154-209), Hewett and others (1936:167, 169), USBOM, (1932, 1937, 1950), Minobras, (1973:10), and NDM (1991).

REFERENCES

All references in this report are listed at <http://www.greggwilkerson.com/iv-references.html>