

Columbia Tungsten Prospect

17N 13E Sec. 15 SBM 35.5669000020
17N 13E Sec. 10 SBM 35.57443999980

-115.57164000000 (Minor Prospect)
-115.56611999900 (Main Prospect)

This deposit is in the northern Clark Mountains area, 2,800 feet northwest of the Colosseum Mine. Scheelite and wolframite occur with quartz veins at a rhyolitic dike near a schist-granite contact. The prospect was being explored and developed on small scale in early 1952. (From Wright, 1953, p. 144, deposit #356).

Host rocks at the surface are PreCambrian gneiss (Hewett, 1956, plate 1).

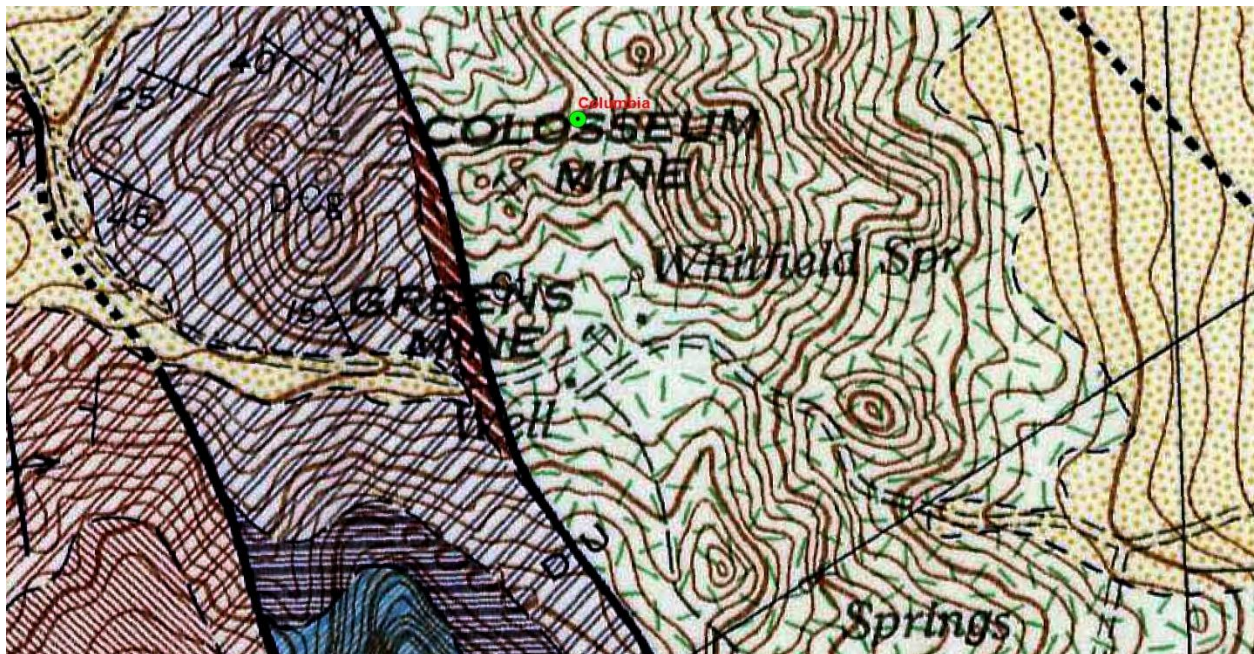


Figure 1. Geology of the Columbia Tungsten mine and surrounding area. From Hewett, 1956, Plate 1.