

Ivanpah Mammoth Lead (Ag) Mine

15N 14E Sec. 14 SBM

35.38361999990

-115.45390000100 Occurrence

15N 14E Sec. 14 SBM

35.38440999980

-115.45414000000 Prospect

The Ivanpah Mammoth is on the east slope of Ivanpah Mountains .south of Mountain Pass.

The mine, at the surface, is hosted by PreCambrian gneiss (Hewett, 1956, Plate 1.). It is 2,625 feet east of the Clark Mountain Fault.

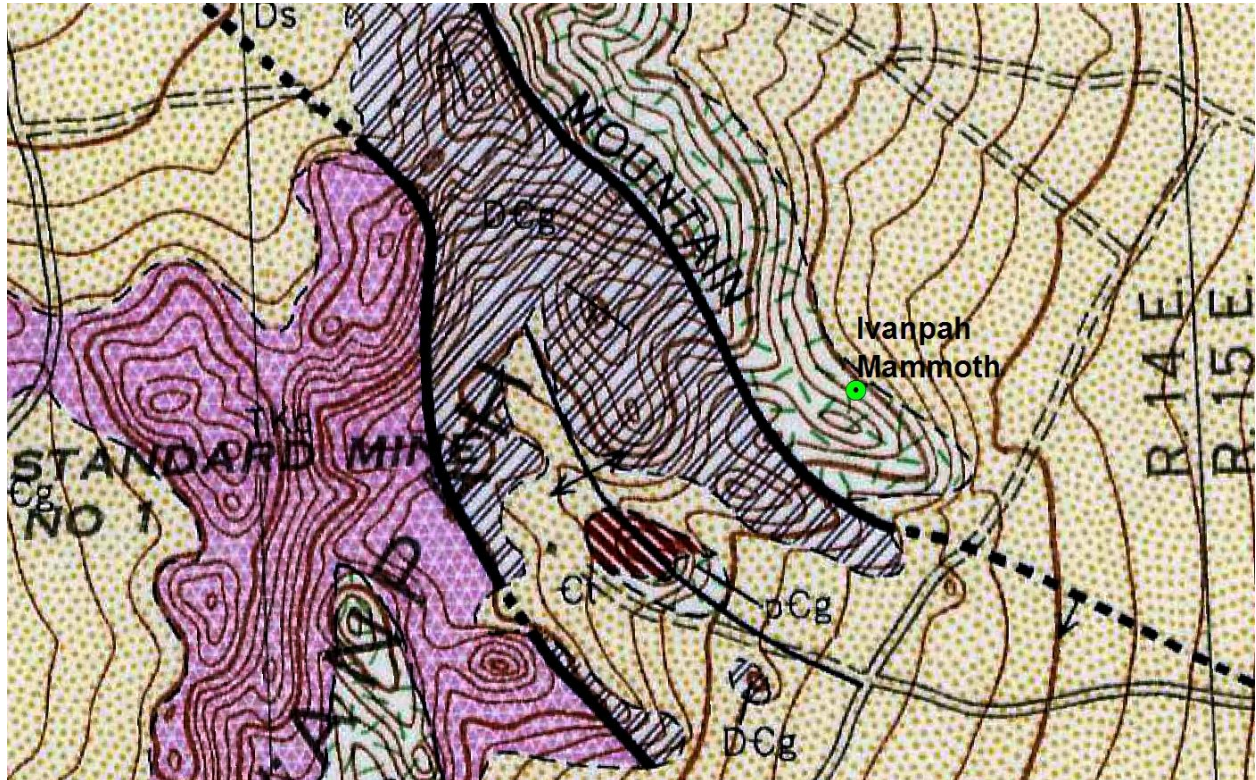


Figure 1. Geologic map of the Ivanpah Mammoth Mine and surrounding area. From Hewett, 1956, Plate 1. Muddied scale 1:24,000.

At this mine there are two veins one containing silver and copper the other copper and gold. The veins were explored by a 100-ft. deep shaft. The mine was idle in 1953. (Wright and others, 1953, p. 13; See also Aubury 1908, p. 330; Cloudman 1919, p. 787; Eric, 1948, p. 308; Tucker and Sampson, 1930, p. 214; Tucker and Sampson, 1931, p.273.)