

LONE PINE RAILROAD, INYO COUNTY, CALIFORNIA

Gregg Wilkerson and Larry Vredenburgh
Feb. 9, 2024

INTRODUCTION

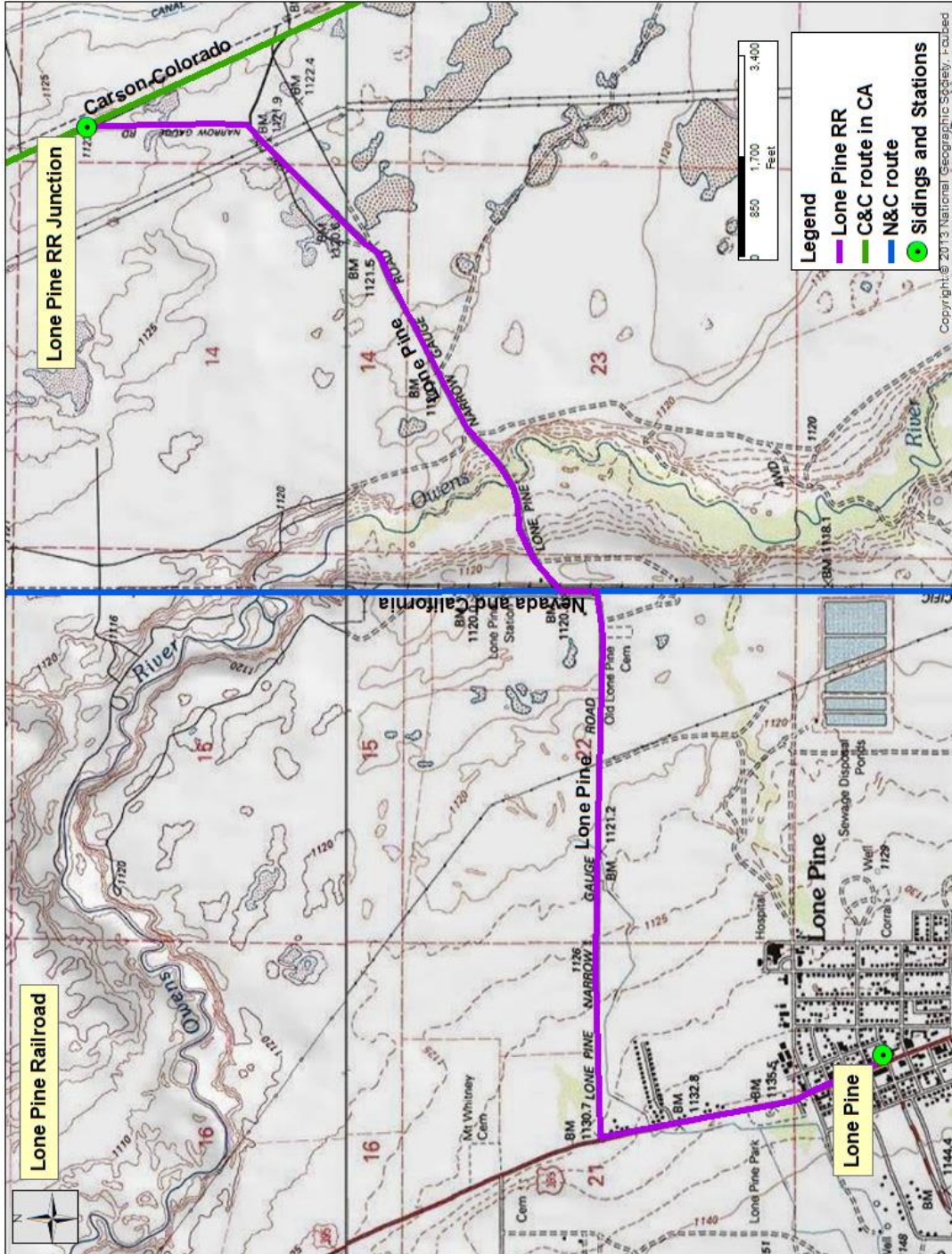
This report is part of a research project that describes the relationships between mines and railroads in the Mojave Desert and southwestern Great Basin of southeastern California and southwestern Nevada. t

The collection can be accessed at
<http://www.greggwilkerson.com/railroads.html>

Italics indicate quotations.

HISTORY

The Lone Pine narrow gauge railroad connected the Carson and Colorado (C&C) Railroad and the Nevada and California (N&C) Railroad to the town of Lone Pine. This spur was created as part of the C&C line to Owenyo in 1910 (Myrick, 1963:208). The line was abandoned with the demise of the old Carson and Colorado and old Nevada and California by Southern Pacific in 1960.



REFERENCES

All references in this report are available at <http://www.greggwilkerson.com/iv-references.html>