

## **PACIFIC CEMENT PLASTER (AMBOY)**

Gregg Wilkerson and Larry Vredenburgh  
Feb. 9, 2024

### **INTRODUCTION**

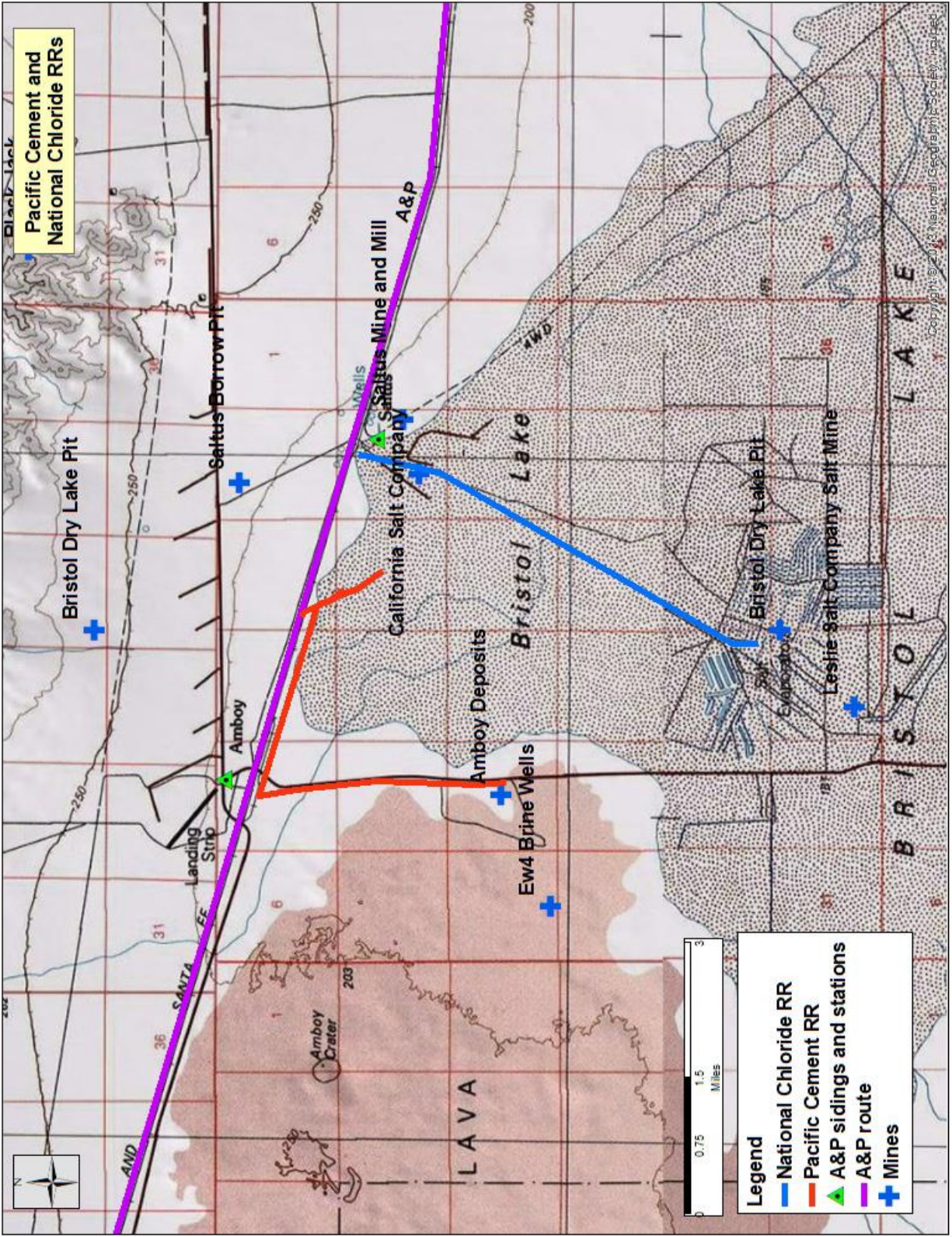
This report is part of a research project that describes the relationships between mines and railroads in the Mojave Desert and southwestern Great Basin of southeastern California and southwestern Nevada. t

The collection can be accessed at  
<http://www.greggwilkerson.com/railroads.html>

*Italics* indicate quotations.

### **HISTORY**

The Pacific Cement Plaster Company was situated between Amboy Crater and Bristol Lake. It is connected to the Atlantic and Pacific (A&P) railroad. The company built a mill at Amboy as early as 1905 and commenced operations the following year. To feed the mill, a narrow-gauge track about 1.5 miles long was strung south to the gypsum beds in Bristol Lake. The cars were pulled by mules (Myrick, 1963:835-837). The California Salt Company had its own railroad to process salt from evaporation ditches in Bristol Lake. They were producing salt in 1904. The mill and railroad were refurbished during WWII and is still in operation (Myrick, 1963:840).



## REFERENCES

All references in this report are available at  
<http://www.greggwilkerson.com/iv-references.html>