

PORTLAND CEMENT RAILROAD, MOJAVE CALIFORNIA

Gregg Wilkerson and Larry Vredenburg

Feb. 9, 2024

INTRODUCTION

This report is part of a research project that describes the relationships between mines and railroads in the Mojave Desert and southwestern Great Basin of southeastern California and southwestern Nevada. t

The collection can be accessed at

<http://www.greggwilkerson.com/railroads.html>

Italics indicate quotations.

HISTORY

The Portland limestone mine and cement plant were built west of Mojave along the southeast margin of the Tehachapi mountains in 1954-1955. The original name was the Creal mine and plant. To service this mine and plant, the Portland Cement (PC) railroad was built that connected to Mojave where it joined the Atchison, Topeka and Santa Fe railroad. This was formerly part of the San Joaquin Valley line. In 1962, 95% of the plant output was exported by rail (Troxel and Morton, 1962:221-222).

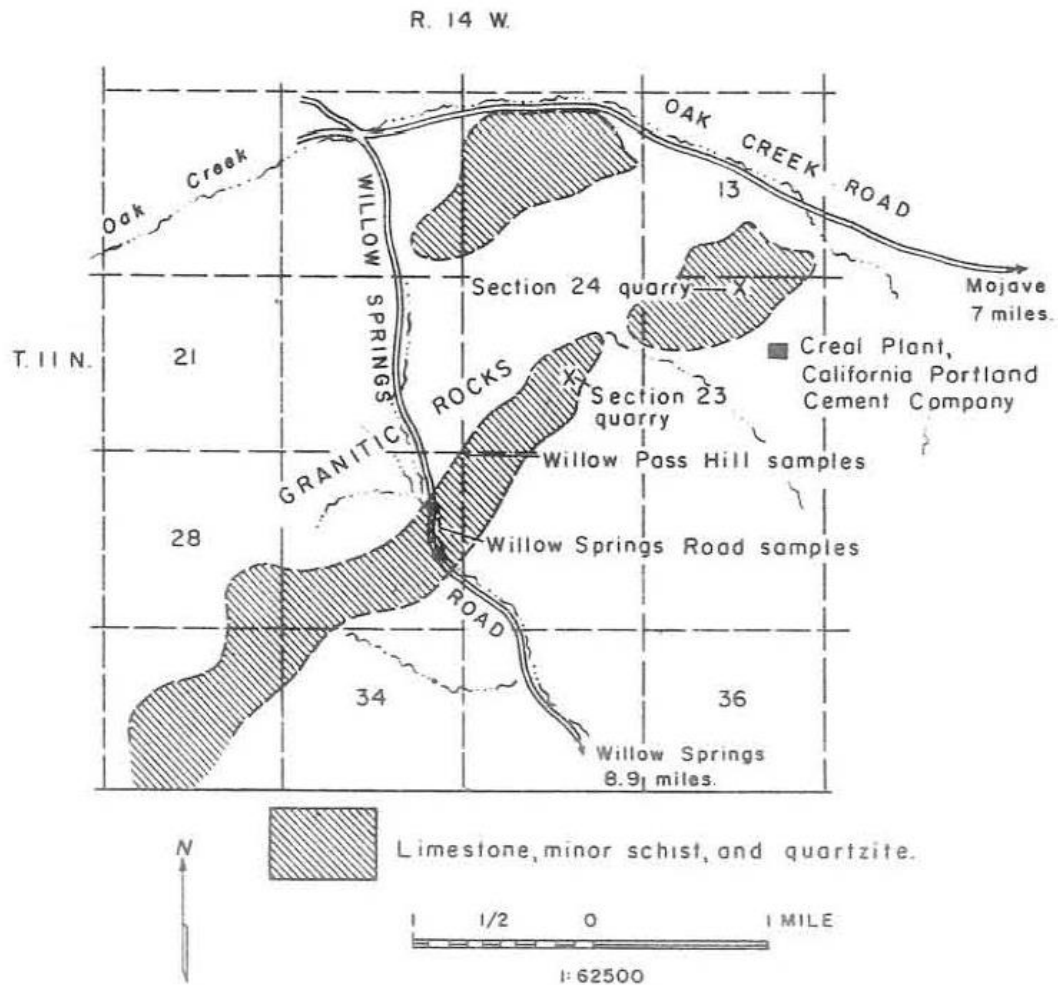
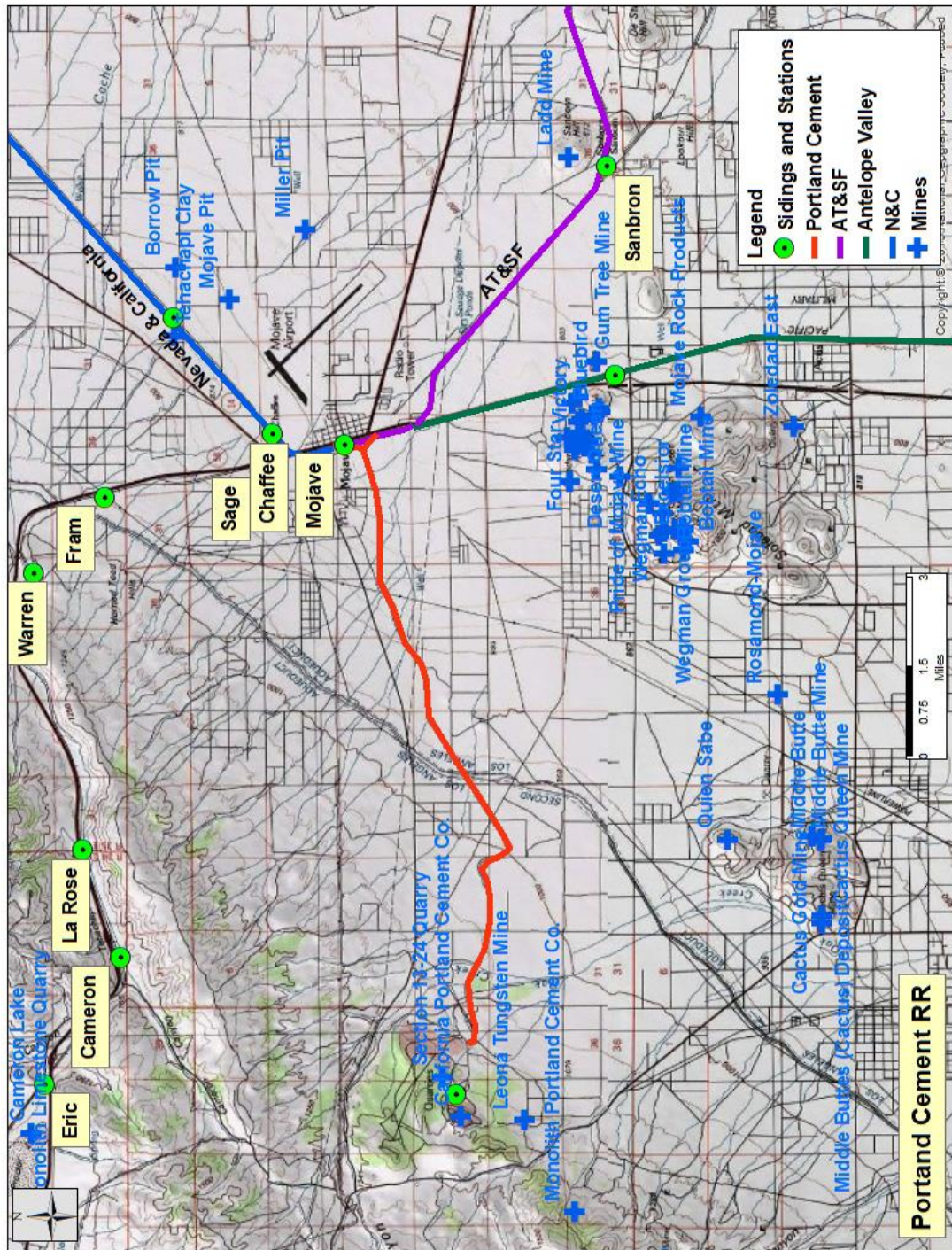
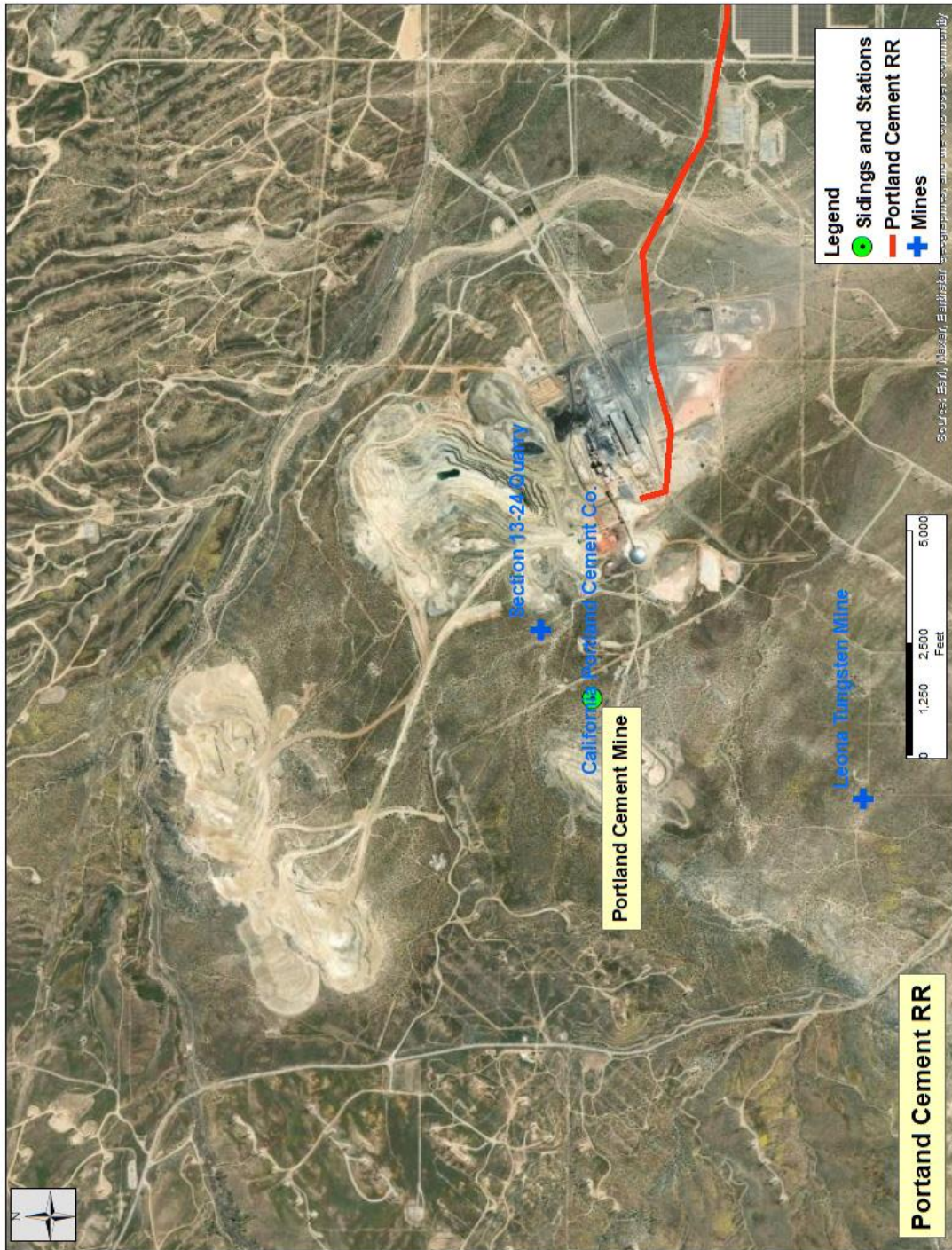


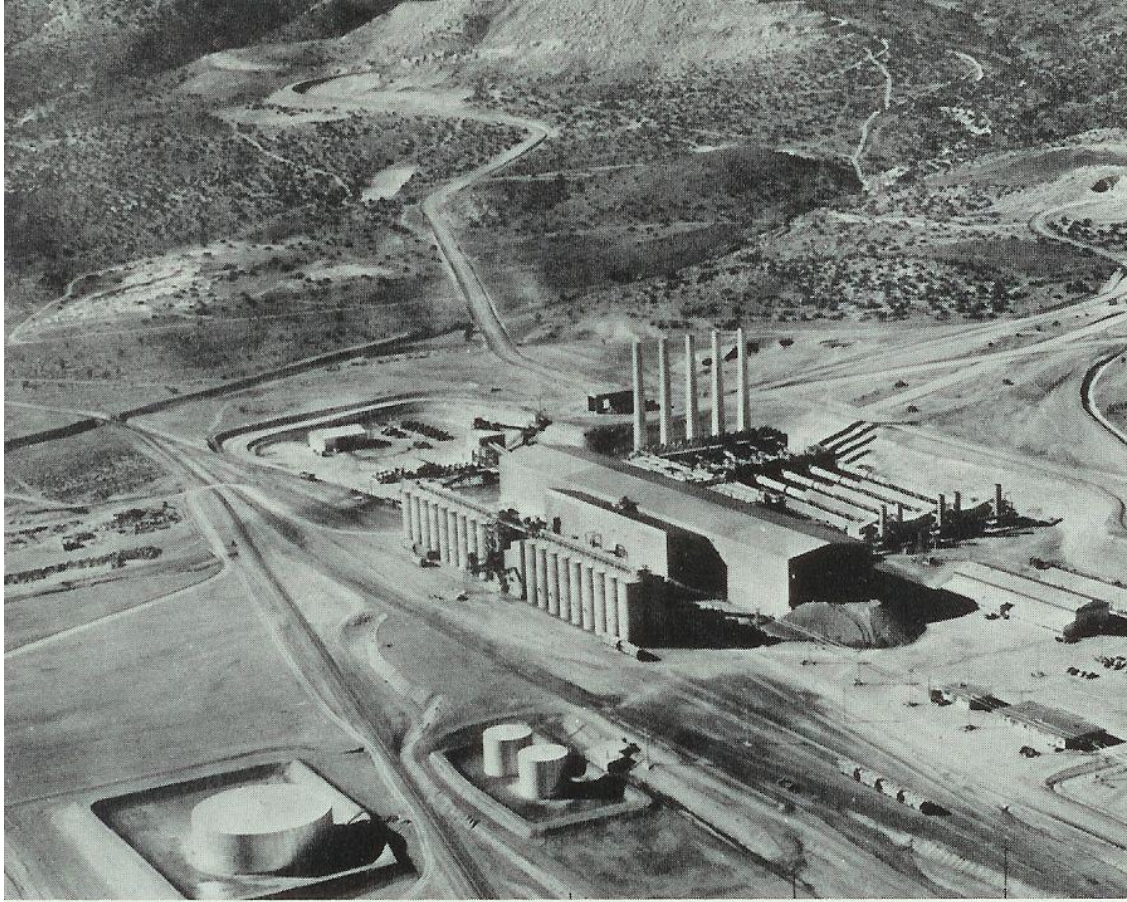
Figure 74. Geologic sketch of Willow Springs Rd.-Oak Creek Rd. area showing locations of limestone samples listed in Table 12.

Caption: Geologic sketch of the Portland Cement mine and surrounding areas. From Troxel and Morton, 1962:221.





Starting from Mojave the PC went west to go under power lines and then southwest past a pair of pipelines to the Los Angeles Aqueduct. From there it continued southwest and west to the plant in an unnamed hill between Oak Creek to the north and Willow Creek to the west.



Caption: Cal Portland Cement plant with railroad lines, Mojave in 1972. From <https://www.pinterest.com/pin/357754764129999754/> accessed Jan. 1, 2024.



Caption. Portland Cement Plant and wind farm. From <https://en.icement.ru/content/news/calportland-converts-mojave-cement-plant-production-to-portland-limestone-cement/> accessed Feb. 11, 2024.



Caption: *The California Portland Cement Company's Mojave Plant extracts limestone with which it then produces cement, at this 9,000 acre site. The plant opened in 1955, after a nine mile rail spur connecting the site to the main line at Mojave was built by the company. The plant has been expanded and*

modernized a number of times, most recently in the early 1980's. It is one of three locations for this company: the others are at Rillito, Arizona, and at Colton, California (where a literal mountain of limestone can be observed slowly disappearing, on the south side of Interstate 10). Cement from the Mojave facility was used to build the Bonaventure Hotel in downtown L.A., Dodger's Stadium, and the second L.A. Aqueduct. From <https://clui.org/ludb/site/california-portland-cement-companys-mojave-plant> accessed Feb. 11, 2024.



Caption: Mojave Plant, Cal Portland Cement, 2020. From <https://www.airbestpractices.com/energy-manager/corporate-sustainability-programs/calportland-continues-walk-walk-sustainability> accessed Feb. 12, 2024.



RailPictures.Net - Image Copyright Chris Mohs

Caption. Coming from Mojave, northbound Union Pacific 8863 with a consist of stacks, passes the Portland Cement plant at Monolith on its way to Tehachapi. From railpictures.net;

<https://es44c4.tumblr.com/post/116250005350/coming-from-mojave-northbound-union-pacific-8863>
accessed Feb. 11, 2024.

REFERENCES

All references in this report are available at

<http://www.greggwilkerson.com/iv-references.html>