

YELLOW PINE (GOODSPRINGS) RAILROAD AND ASSOCIATED MINING AREAS, HUMBOLT COUNTY, CALIFORNIA

Gregg Wilkerson and Larry Vredenburg
Feb. 14, 2024

INTRODUCTION

This report is part of a research project that describes the relationships between mines and railroads in the Mojave Desert and southwestern Great Basin of southeastern California and southwestern Nevada. t

The collection can be accessed at
<http://www.greggwilkerson.com/railroads.html>

Italics indicate quotations.

HISTORY

The Yellow Pine (Goodsprings Mining District) Railroad connected to the Los Angeles and Salt Lake (LA&SL) Railroad at Jean siding and was near the mines of the southern Spring Mountains (Myrick, 1963:753-759).

Minerals were known in the Spring Mountains to Native Americans and Spanish explorers. A systematic reconnaissance of the area was led by Nathaniel V. Jones in 1856 and the Potosi Mine was developed in 1861. Lead development was attempted from 1861 to 1891 and gold from 1893 to 1898 when the Yellow Pine mill began processing copper ores. In 1905 the LA&SL railroad came to Jean. The district's proximity to the railroad connecting Mojave to Las Vegas in Ivanpah Valley at Jean facilitated mine developments as did the re-evaluation of zinc resources. A narrow-gauge railroad from Jean to Goodsprings and the Yellow Pine mine was built in 1910-1911.

More lead, zinc and copper zinc mines were opened during WWI. Between 1902 and 1930, cyanidation extracted additional amounts gold and silver from the ores. There was some renewal of activity during WWII, but by 1964 most of the mines were dormant and the railroad was dismantled (Hewett, 1931, Longwell and others, 1965, Wilkerson 2018a, 2019b; Myrick, 1963:753-759). The rails were torn up in 1934 (Queho Posse Chapter 1919 E Clampus Vitus, 2023).



Caption: Yellow Pine railroad engine on trestle. From <https://www.pinterest.com/pin/619667229954407697/> accessed Nov. 14, 2023.

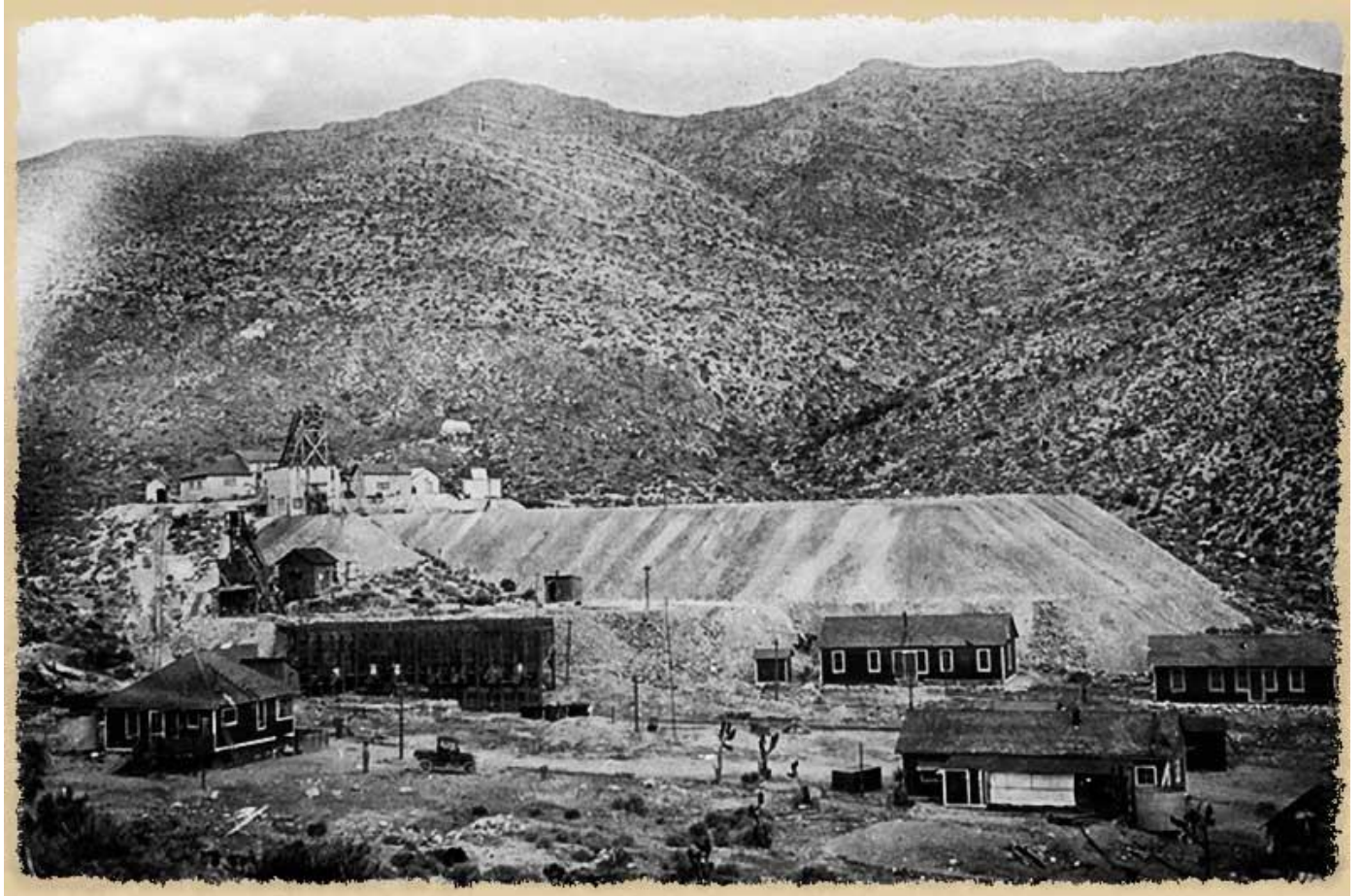


Property of: University of Nevada @ Las Vegas ~ Ferron-Bracken Collection ~ ID: pho013882

Caption: Family with engine, Yellow Pine railroad. From University of Nevada Las Vegas Ferron-Bracken Collection No. 012882.



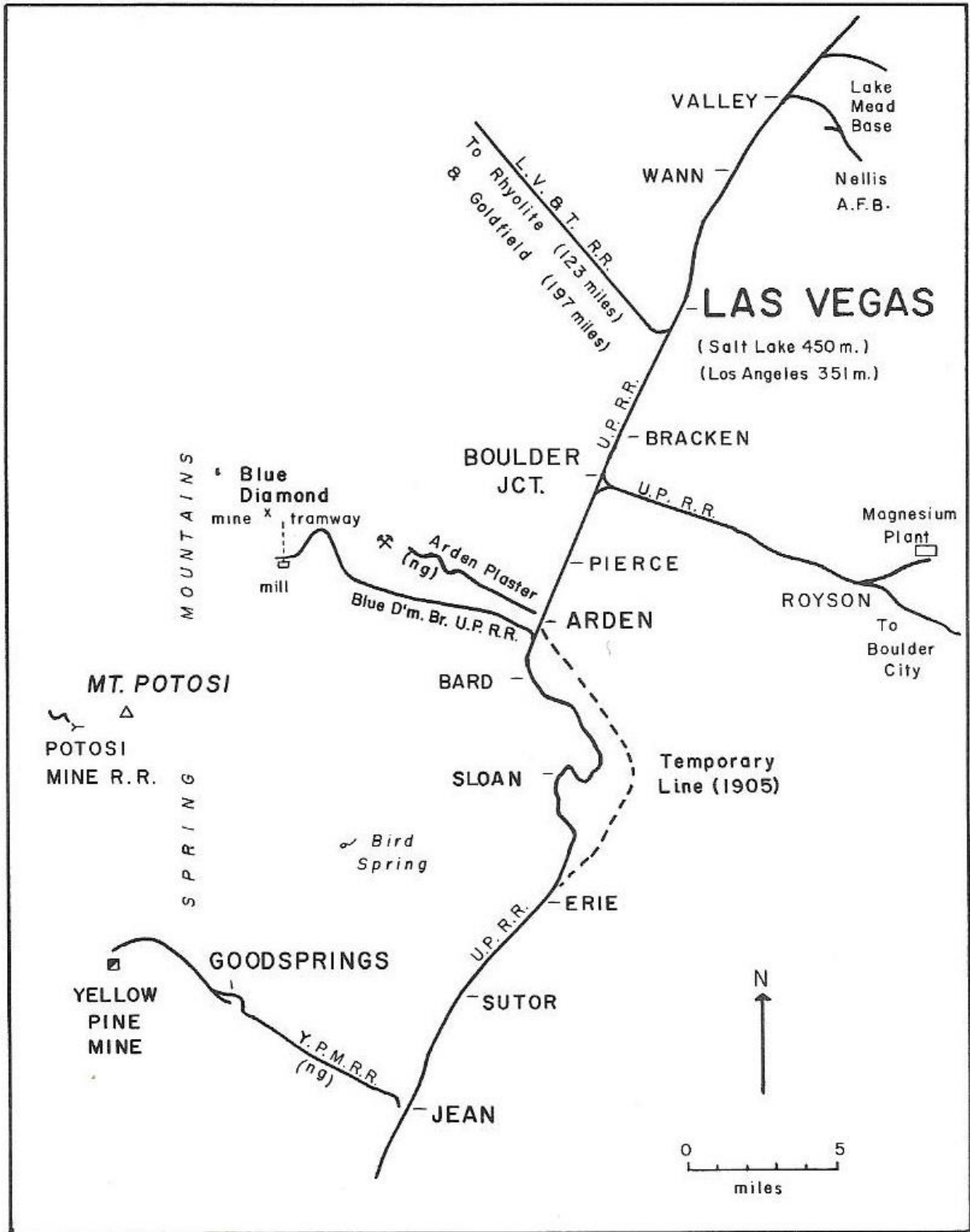
Caption: Photograph of miners and Yellow Pine mine buildings, Goodsprings (Nev.), 1900-1925. Squires Collection. UNLV Libraries Special Collections & Archives. Also, from <https://historiclasvegasproject.com/Yellow-Pine-Mining-Company-Railroad.html> accessed Nov. 15, 2023.



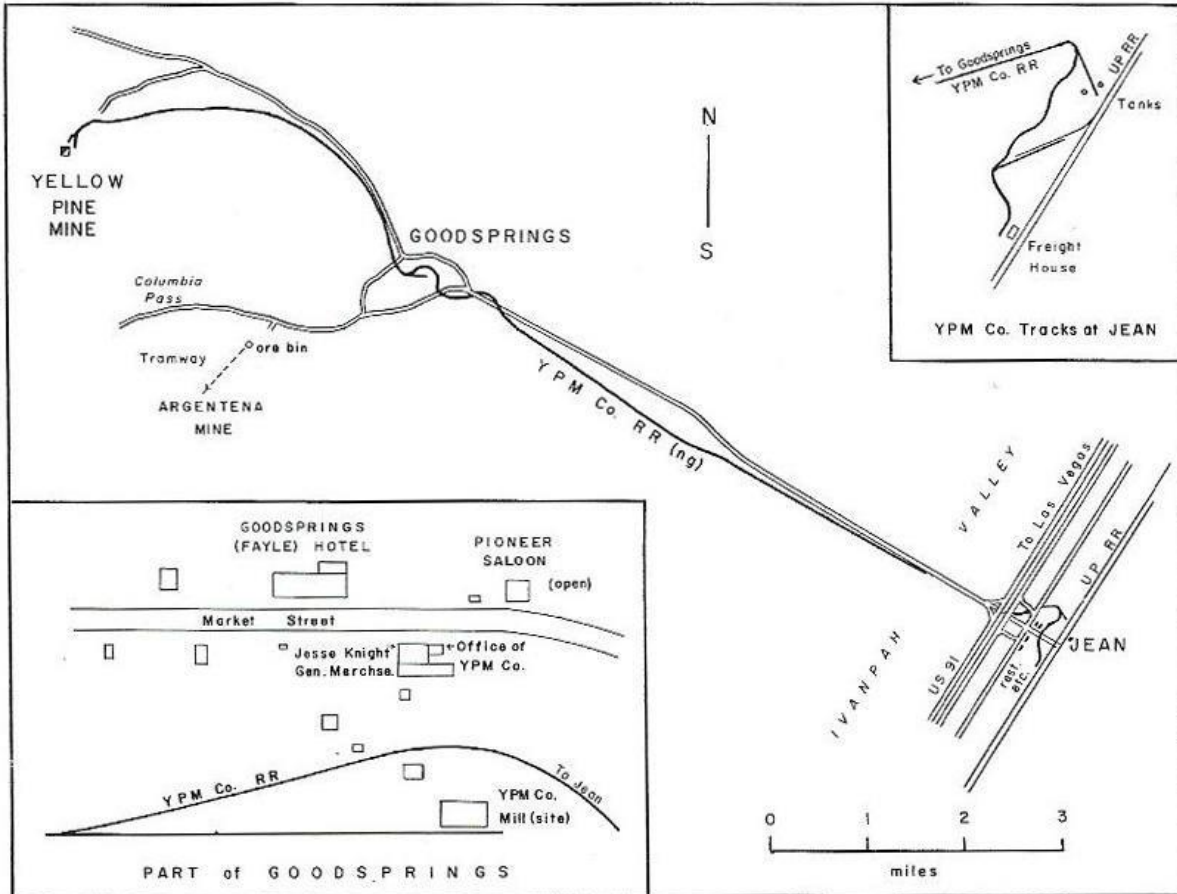
Caption: Yellow Pine Mine circa 1910. From https://www.mine-explorer.com/Yellow_Pine/Yellow%20Pine%20old%201.jpg accessed Jan. 1, 2024



Caption: Yellow Pine Mine circa 2010. From [https://www.mine-explorer.com/Yellow Pine/Yellow%20Pine%20old%201.jpg](https://www.mine-explorer.com/Yellow_Pine/Yellow%20Pine%20old%201.jpg) accessed Jan. 1, 2024



Caption: Las Vegas Area railroads. From Myrick, 1963, p. 761.



Caption. Route of the Yellow Pine (Goodsprings) Railroad. From Myrick, 1963, p. 753.

The Southern Spring Mountains Mining District includes the Goodsprings, Yellow Pine and Potosi mining districts. Development and production in the district were influenced by world economics for lead and zinc, the development of railroads, improvements in mining and beneficiation technologies, and metallurgical understanding of the ores (Wilkerson 2018a, 2019b).

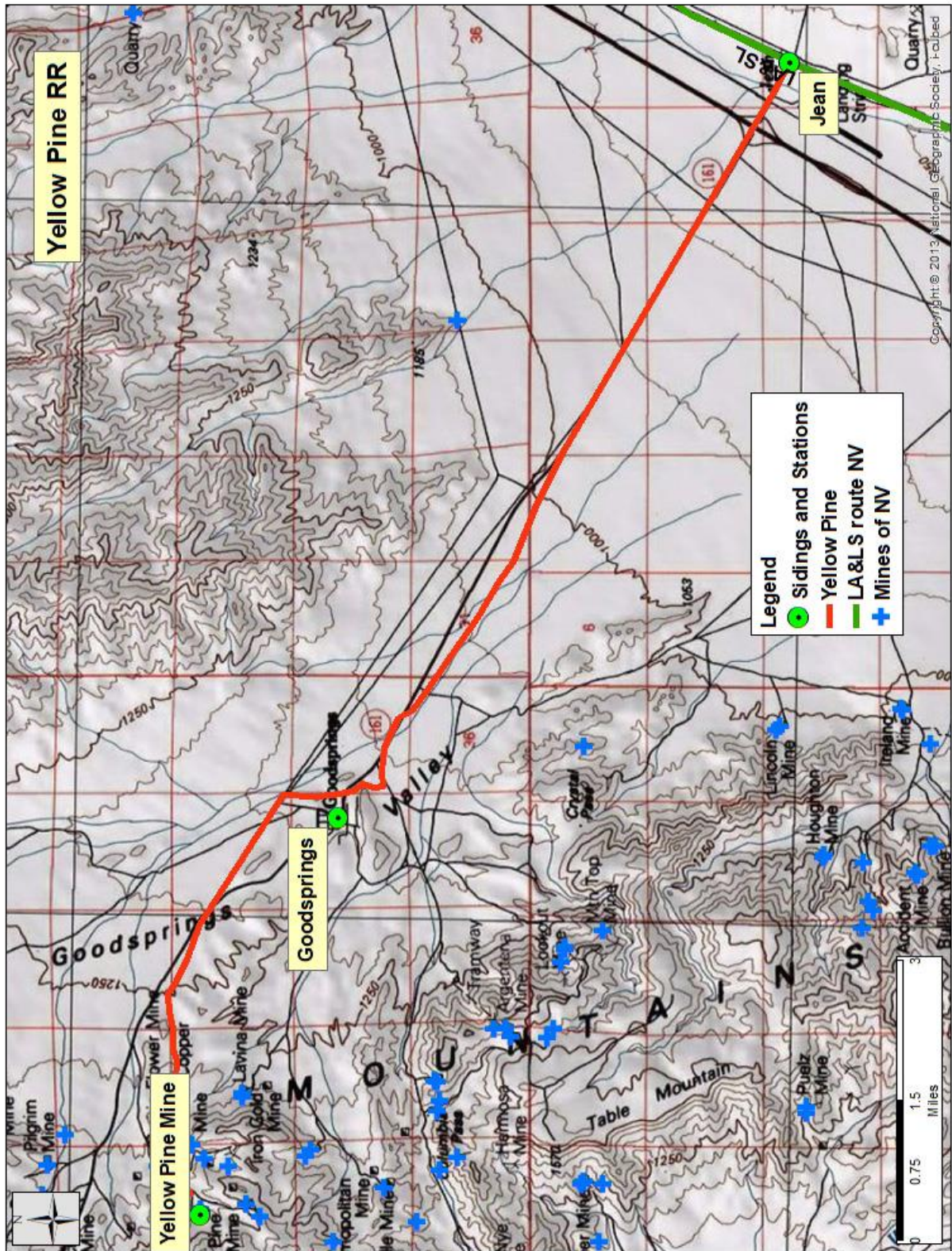
Table 2. Primary mines of the Southern Spring Mountains listed by commodity

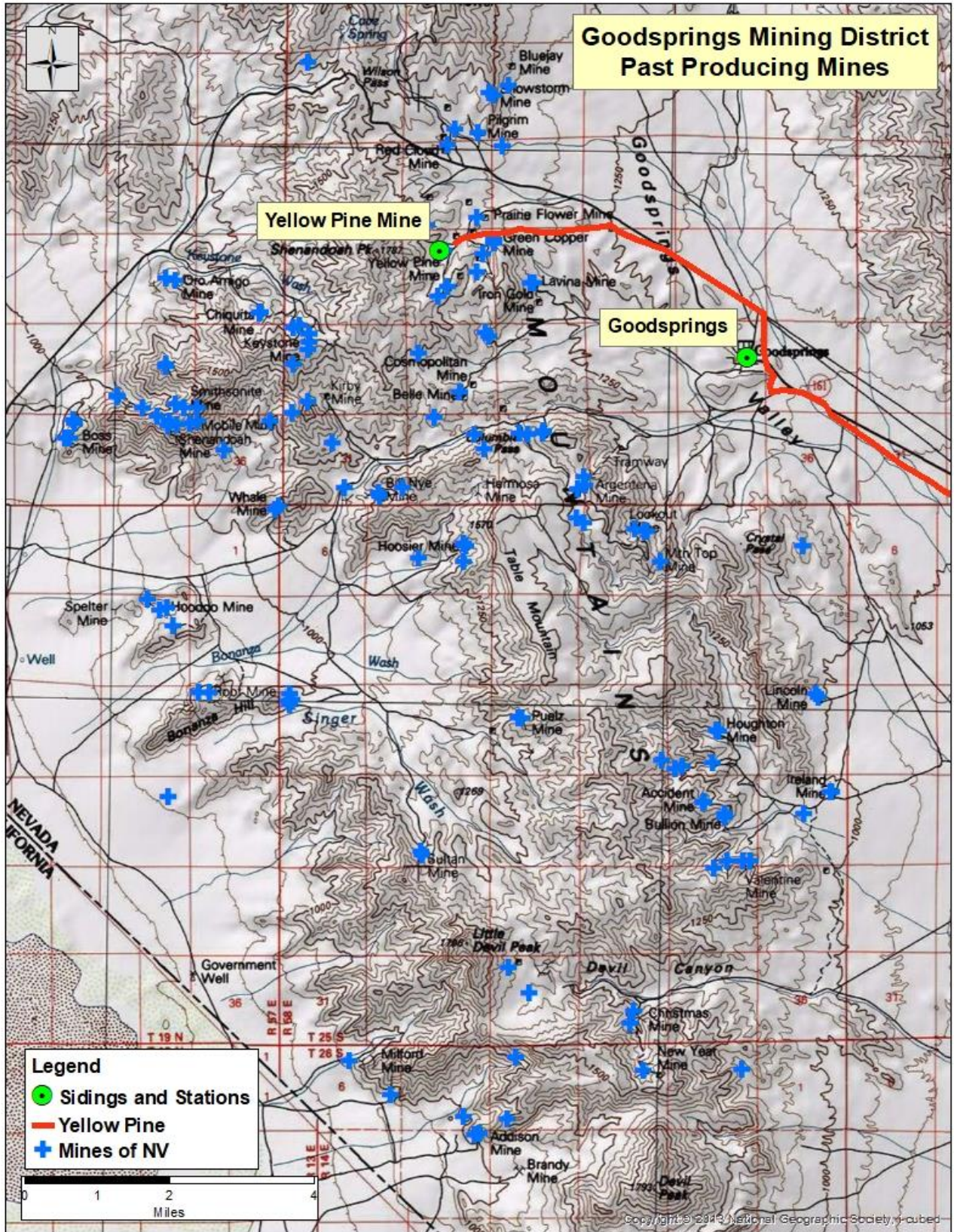
Commodity and (number of deposits)	Primary deposit or mine names
Antimony (1)	Antimony Prospect
Cobalt (3)	Highline, Columbia, Copper Chief,
Copper (37)	Azurite, Belle (Maybelle), Blue Jay, Boss, Columbia, Copper Chief, Copperside, , Doubleup, Fitzhugh Lee, Green Copper, Highline, Ironside, Keystone, Lincoln, Ninety-nine, Oro Amigo, Rose, Snowstorm
Flagstone (1)	Flagstone Quarry
Gold (19)	Chaquita, Clementina, Keystone, Lavinia, Red Cloud
Lead (41)	Kirby, Ruth, Silver Gem (Christmas Group)
Perlite (1)	U.S. Perlite
Platinum (2)	Little Tommy G No. 9, Boss
Radium (1)	Radium Deposit
Silver (4)	Crystal Pass, Lavinia, Lincoln, Valley View
Stone (2)	Unnamed quarries No. 1 and No. 2
Uranium (7)	Rosetta No. 1 and No. 2, Jean-Slone, Uranium Locality 27
Vanadium (2)	Akron, Valley Forge
Zinc (60)	Akron, Houton, Combination (Nob Hill Area), Little Betty, Monte Cristo (Combination Lode), Van Henry (Hoosier)
Zinc or Lead (97)	Accident, Addison (Milford), Alice (Yellow Pine Extension), Anchor, Bullion, Christmas (Silver Gem and Eureka) Contact, Dawn, Eureka Silver Gem, Fredrickson, Hermosa (Hooser), Hoodoo, Kirby, Lookout (Annex, Mountain Top), Middlesex, Milford, Milford No. 2, Mobile, Mountain Top (Lookout, Annex), New Year, Palace-Porter, Pilgrim, Potosi, Prairie Flower, Pauline., Root, Ruth, Shenandoah, Sultan, Surprise, Spelter, Tam o-Shanter, Tiffin, Valentine, Whale, Yellowpine

Caption: Primary mines of the Southern Spring Mountains. From Wilkerson, 2019.

ROUTE DESCRIPTION

From the **Jean** station on the LA&SL the Yellowstone Railroad (YR) went northwest across Goodsprings valley to **Goodsprings**. This town was situated between the northeast edge of the Spring Mountains to the southwest and the Bird Springs range to the northeast. From Goodsprings station the YR went north, then northwest, then west to the **Yellow Pine Mine**.





REFERENCES

All references in this report are available at
<http://www.greggwilkerson.com/iv-references.html>